



Technical Data

Specifications & Capacities

TRX80

Translation of the original instructions

[m] [kg]

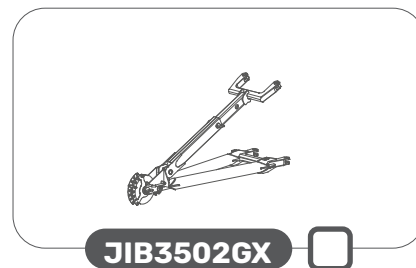
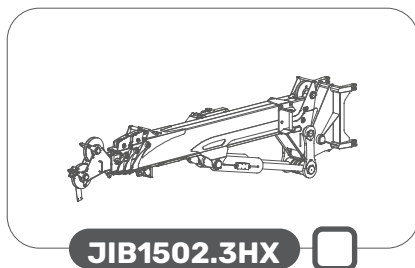
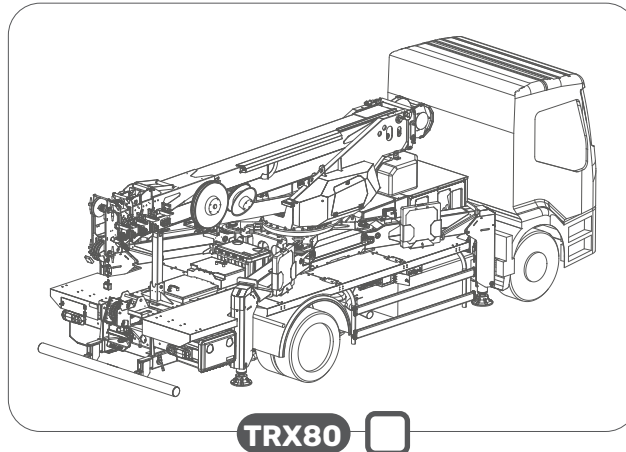
14.04.2026 | REV0.0

CE
EN 13000:2014

INDEX

| | |
|--|----|
| Index | 2 |
| Crane configuration | 3 |
| Overall dimensions | 4 |
| Overall informations..... | 5 |
| Winch | 8 |
| Hookblock..... | 9 |
| Winch rope maximum reach..... | 10 |
| Driving conditions | 11 |
| Turning Radius | 12 |
| Stability areas..... | 13 |
| Tipping line - Load chart selection..... | 14 |
| Stability examples | 15 |
| Main boom load chart..... | 18 |
| Main boom load tables | 19 |
| JIB3502GX load chart..... | 21 |
| JIB3502GX load tables..... | 23 |
| JIB1502.3HX load chart..... | 25 |
| JIB1502.3HX load tables..... | 27 |
| JIB1502.3HX features | 30 |
| JIB3502GX features | 31 |
| Symbols | 32 |

CRANE CONFIGURATION

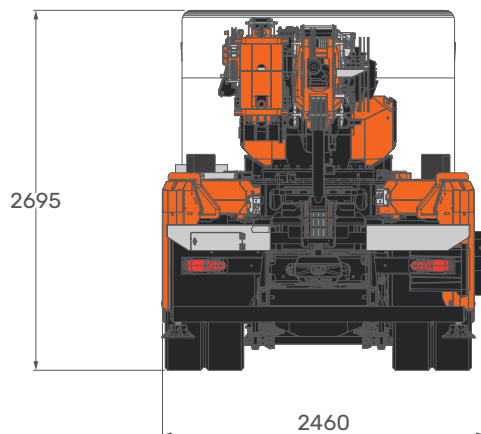
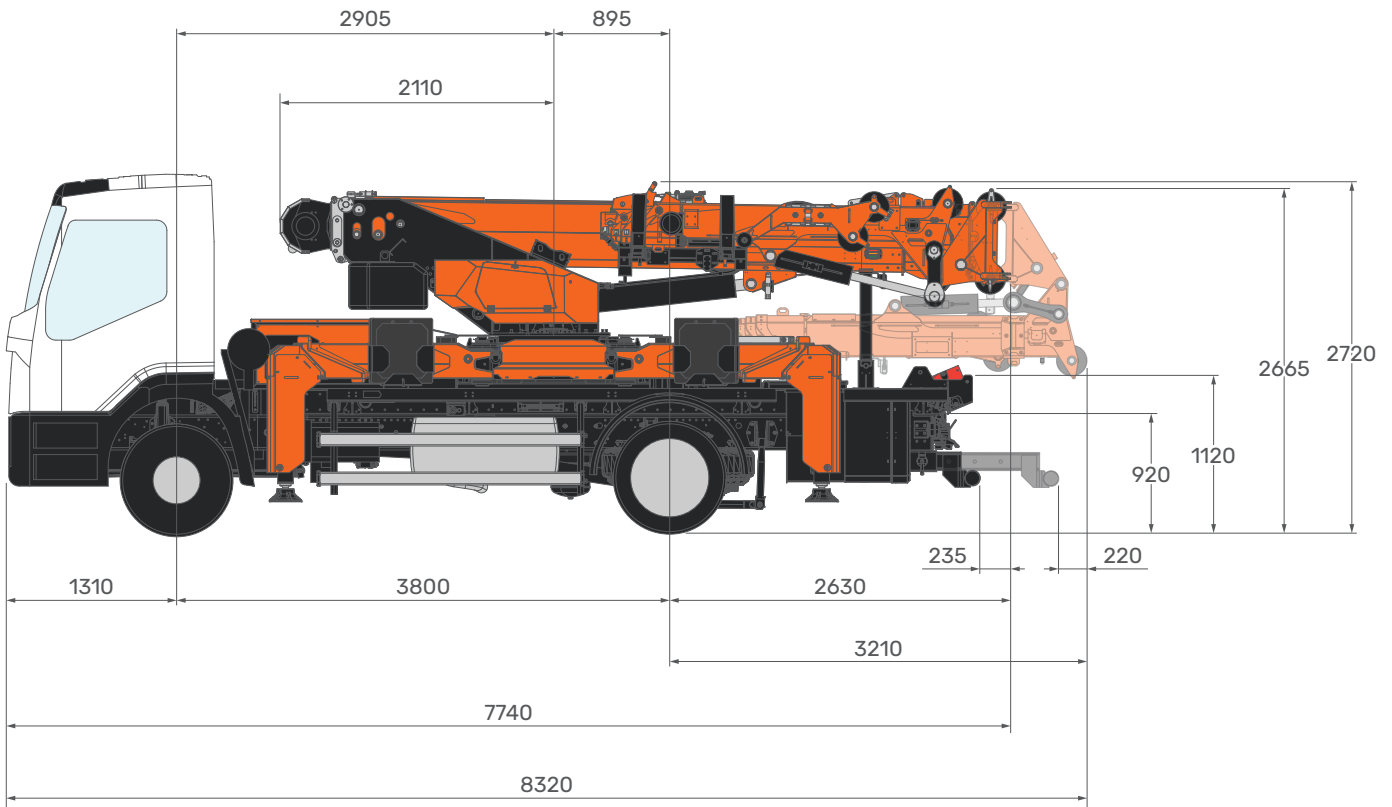


TRX80

Overall dimensions

14.04.2026 | REV.0.0

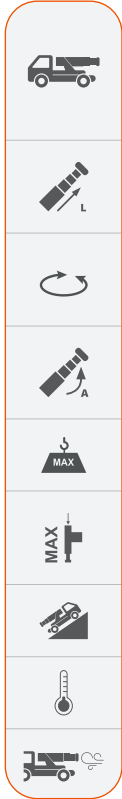
OVERALL DIMENSIONS



[mm]

OVERALL INFORMATIONS

CRANE INFO



| | DESCRIPTION | U.M. | VALUE |
|--------------------------------------|---------------|------|-----------------------|
| OVERALL DIMENSIONS | Height | mm | 2.695 |
| | Length | | 7.740 |
| | Width | | 2.460 |
| BOOM | Length | m | 4,9/17,7 |
| | Speed | s | - (4,9/17,7 m) |
| SLEWING | Angle | ° | 360° |
| | Speed | rpm | - |
| LIFTING | Working Angle | ° | 0°/85° |
| | Speed | s | - (0°/85°) |
| MAX CAPACITY | | kg | 8.000 |
| MAX OUTRIGGERS LOAD | Closed | kg | 8.000 ^[1] |
| | Extended | | 11.100 ^[1] |
| MAX GRADEABILITY | | ° | -° (-%) |
| WORKING TEMPERATURE | | °C | -10°/+40° |
| MAX WIND SPEED IN WORKING CONDITIONS | | m/s | 13,8 |
| Lifting Class (UNI 4301-1) | | A1 | |

^[1]: Static lifting

TRX80

Overall informations

14.04.2026 | REV0.0

WEIGHT



| | | | | |
|---------------------------|------------------------|--------------------|----|-----------------------------|
| TRUCK | DAF XB 16 TON 4x2 | | kg | 4.675 |
| CRANE INSTALLATION | Standard Configuration | With Counterweight | kg | 7.975 ^{[1][2][3]} |
| TOTAL | TRX80 | | kg | 12.650 ^{[1][2][3]} |

ACCESSORIES




| | | | |
|-----------------------------|------------------------|----|-----|
| HOOKBLOCK | 2 ton single line hook | kg | 42 |
| | 3.2T-D10 | | 35 |
| | 8.5T-D10 | | 109 |
| JIB | 3502GX | kg | 70 |
| | 1502.3HX | | 675 |
| HYDRAULIC ACTIVATION | HA-SPX1280 | kg | 40 |
| | HA-JIB1502.3HX | | 20 |
| OUTRIGGERS MATS | OM500.1 (x4) | kg | 92 |


^[1]: Dry weight

^[2]: Estimated fluids weight = 290 kg

^[3]: Without operators (75 kg each)

| | | | | | |
|--------------|---|---------------------|------------------|-----------------|-----|
| MOTOR |  | MOTORIZATION | Power Supply | Lithium Battery | |
| | | | Battery Tension | V | 48 |
| | | | Battery Capacity | Ah | 610 |
| | | | Motor Power | kW | 12 |

| | | | | | | | |
|------------------------|---|------------------------|----|---------------|--------|----|-----|
| ELECTRIC SYSTEM |  | POWER SUPPLY | CE | 1 PH + N + PE | | | |
| | | | | 3 PH + N + PE | | | |
| BATTERY CHARGER |  | BATTERY CHARGER | CE | 1 PH + N + PE | Charge | V | 48 |
| | | | | | | Ah | 50 |
| | | | | 3 PH + N + PE | Charge | V | 48 |
| | | | | | | Ah | 140 |

| | | | | | | |
|-------------------------|---|----------------------------------|----------------|-----|----------------------|----------|
| HYDRAULIC SYSTEM |  | MAX WORKING PRESSURE | | bar | 230 | |
| | | TANK CAPACITY | | L | 100 | |
| | | HYDRAULIC SYSTEM CAPACITY | | L | 180 | |
| | | OIL | OIL-1280 | | Biodegradable | ISO VG46 |
| | | | ARTIC-OIL-1280 | | Mineral | ISO VG46 |
| | | PUMP | Displacement | | cm ³ /rev | 28 |
| Max Oil Flow | | | L/min | 80 | | |

WINCH

WINCH



| LAYER | MAX PULL LINE kg | ROPE SPEED | |
|-------|------------------------|---------------|---------------|
| | | SLOW m/min | FAST m/min |
| 1 | 2.072 ^[1] | 46,4 | 83,5 |
| 2 | 1.893 ^[1] | 50,7 | 91,4 |
| 3 | 1.743 ^[1] | 55,1 | 99,3 |
| 4 | 1.615 ^[1] | 59,5 | 107,2 |
| 5 | 1.504 ^[1] | 63,8 | 115,1 |

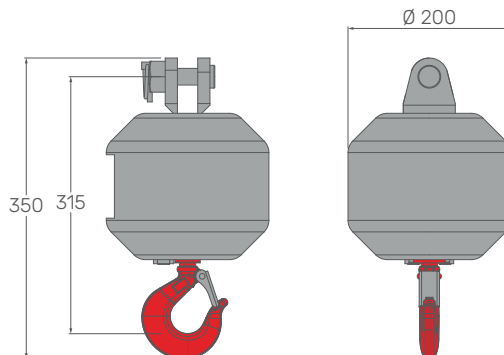
ROPE

| WIRE ROPE | BREAKING LOAD kg | ∅ mm | TOTAL LENGTH m |
|-----------------------------------|------------------------|---------|-------------------|
| Anti-twist 19x7 right lang lay | 9.480 | 10 | 125 |

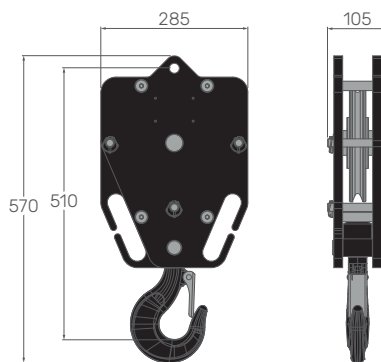
^[1]: LMI limited at 1500 kg.

Maximum speed and maximum lifting capacity cannot be contemporary.

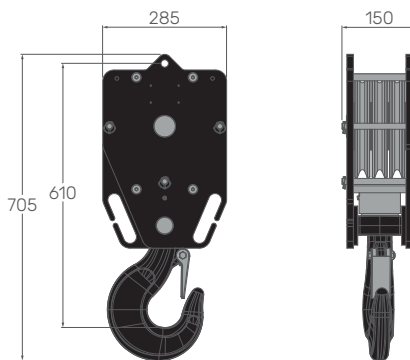
HOOKBLOCK



| MODEL | LOAD | | N° OF | |
|------------------------|------|-------|---------|-------|
| | | | Sheaves | Lines |
| 2 ton single line hook | kg | 1.500 | - | 1 |



| MODEL | LOAD | | N° OF | |
|----------|------|-------|---------|-------|
| | | | Sheaves | Lines |
| 3.2T-D10 | kg | 3.000 | 1 | 2 |



| MODEL | LOAD | | N° OF | |
|----------|------|-------|---------|-------|
| | | | Sheaves | Lines |
| 8.5T-D10 | kg | 3.000 | 3 | 2 |
| | | 6.000 | | 4 |
| | | 8.000 | | 6 |

HOOKBLOCK

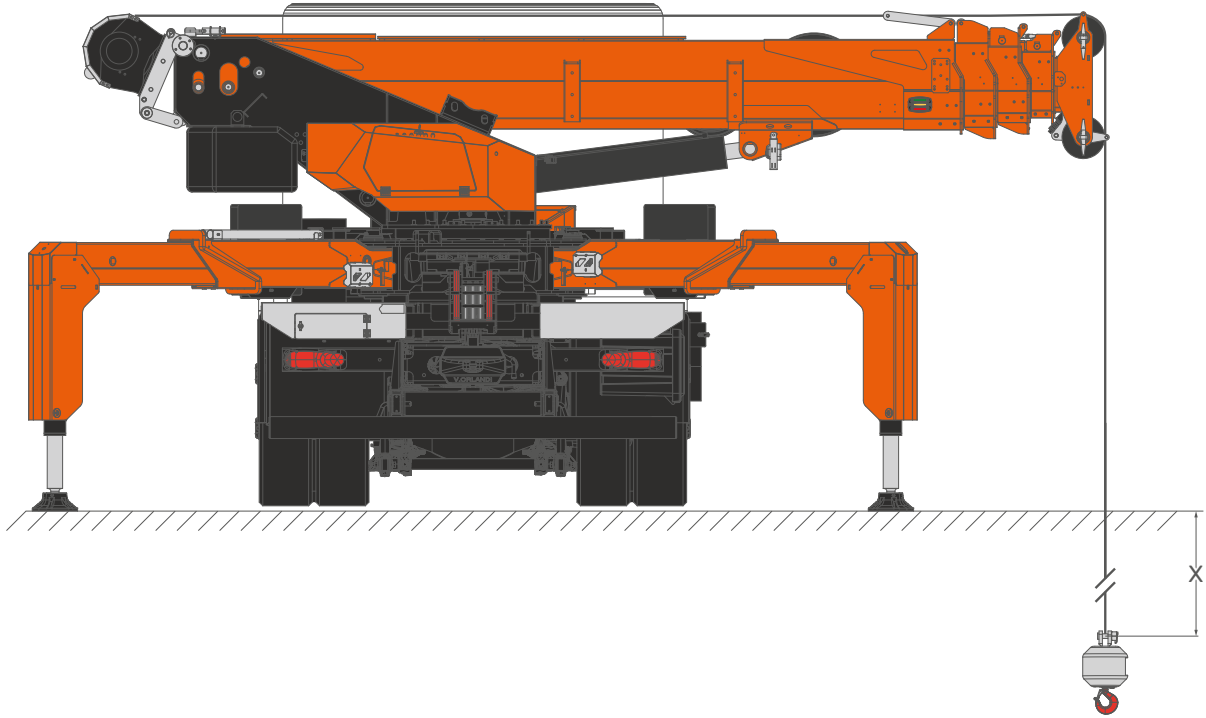


TRX80

Winch rope maximum reach

14.04.2026 | REV0.0

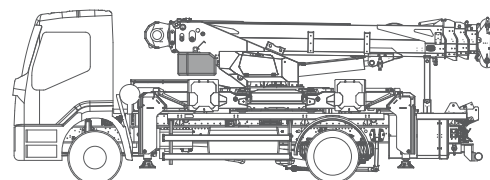
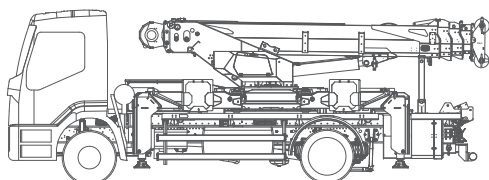
WINCH ROPE MAX REACH



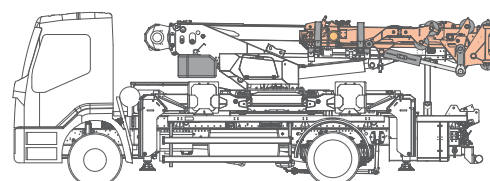
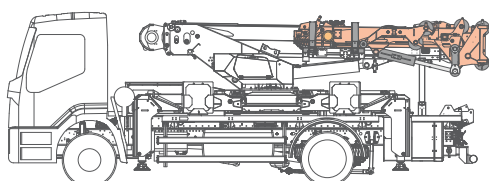
| | | | | | | |
|-------------|--|-------|---------------|---|---|-----|
| ROPE | | WINCH | Parts of Line | 1 | m | 112 |
| | | | | 2 | | 54 |
| | | | | 4 | | 25 |
| | | | | 6 | | 16 |

DRIVING CONDITIONS

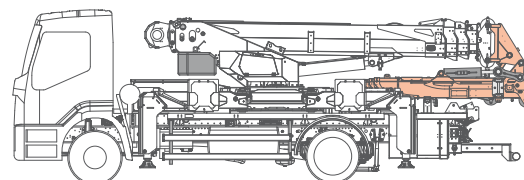
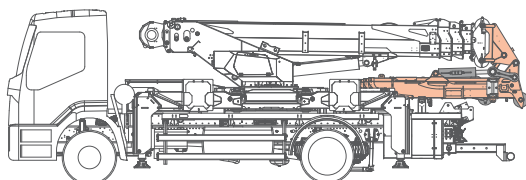
AXLE LOAD



| CONFIGURATION | FRONT | REAR | TOTAL |
|-----------------------|----------------------|----------------------|--------|
| | kg | | |
| WITHOUT COUNTERWEIGHT | 4.170 ^[1] | 7.670 ^[1] | 11.840 |
| WITH COUNTERWEIGHT | 5.050 ^[1] | 8.290 ^[1] | 13.340 |



| CONFIGURATION | FRONT | REAR | TOTAL |
|-----------------------|----------------------|----------------------|--------|
| | kg | | |
| WITHOUT COUNTERWEIGHT | 3.950 ^[1] | 8.570 ^[1] | 12.520 |
| WITH COUNTERWEIGHT | 4.870 ^[1] | 9.150 ^[1] | 14.020 |



| CONFIGURATION | FRONT | REAR | TOTAL |
|-----------------------|----------------------|----------------------|--------|
| | kg | | |
| WITHOUT COUNTERWEIGHT | 3.850 ^[1] | 8.670 ^[1] | 12.520 |
| WITH COUNTERWEIGHT | 4.750 ^[1] | 9.270 ^[1] | 14.020 |

^[1]: The indicated loads consider two persons on board, all operating fluids and accessories

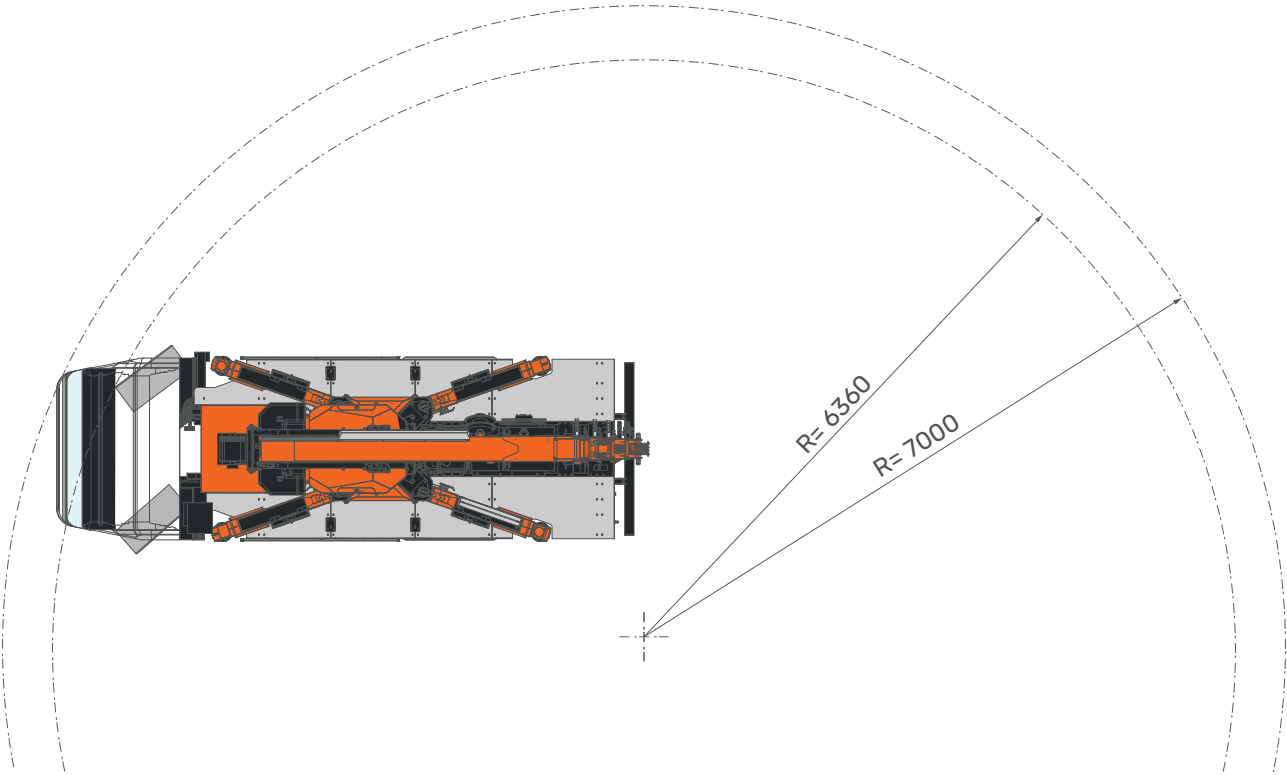
^[2]: Max vehicle load: Front 6.000 kg - Rear 10.500 kg

TRX80

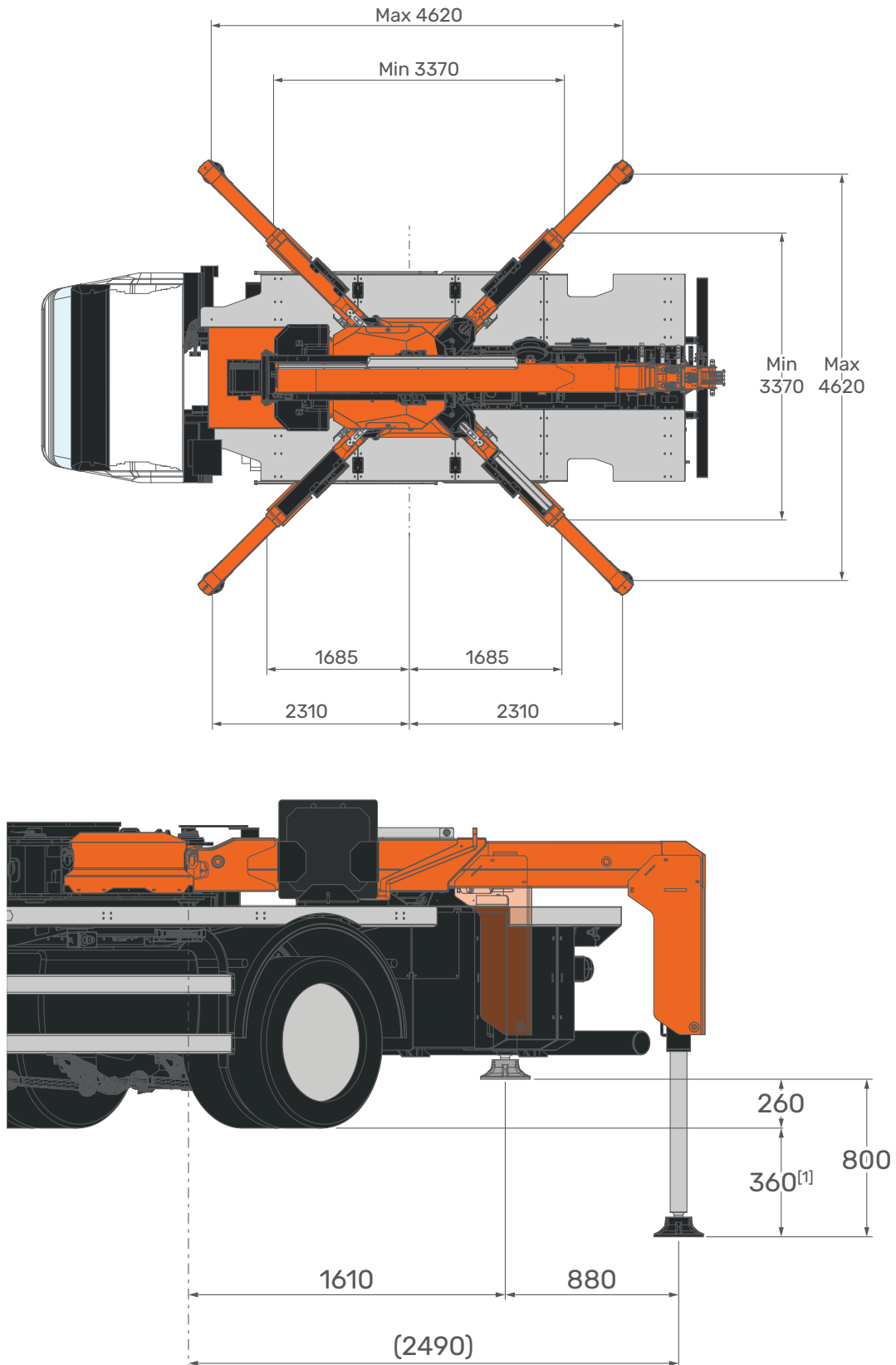
Turning Radius

14.04.2026 | REV0.0

TURNING RADIUS



STABILITY AREAS



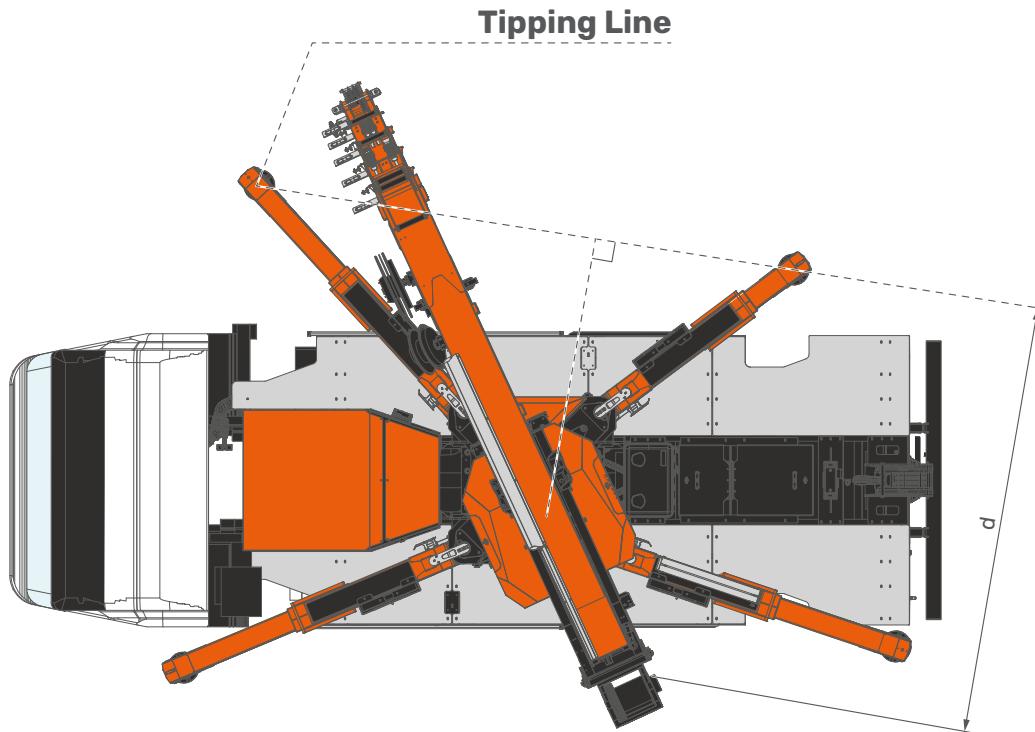
[mm] ^[1]: The dimension has been given considering the suspension travel

TRX80

Tipping line - Load chart selection

14.04.2026 | REV0.0

TIPPING LINE



LOAD CHART SELECTION

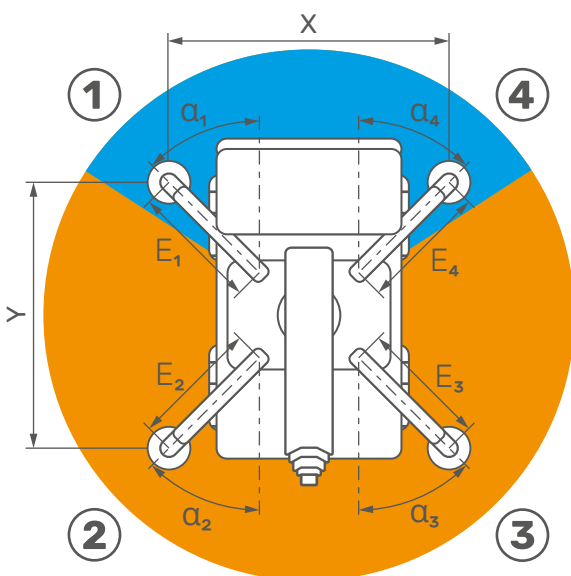
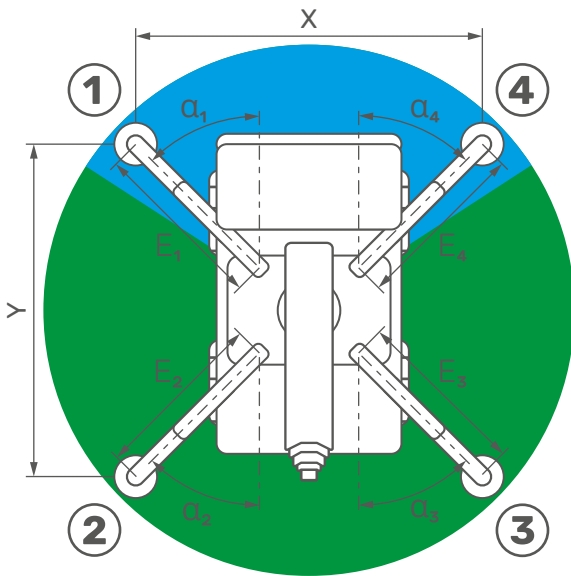
| LOAD CHART | d = 1,04 m | | d = 1,34 m | | d = 1,68 m | | d = 2,0 m | |
|---------------------------------|------------|--|------------|----|------------|----|-----------|----|
| | | | | | | | | J7 |
| | | | | | | J6 | | |
| | | | | J5 | | | | |
| | | | J4 | | | | | |
| | | | | | | | | |
| J0 - No LIFTING CAPACITY | | | | | | | | |

STABILITY AREA

| LOAD CHART | FUNCTION |
|------------|---------------------|
| J4-J7 | Crane Stabilized |
| J0 | No Lifting Capacity |

CRANE PERFORMANCE

STABILITY EXAMPLES

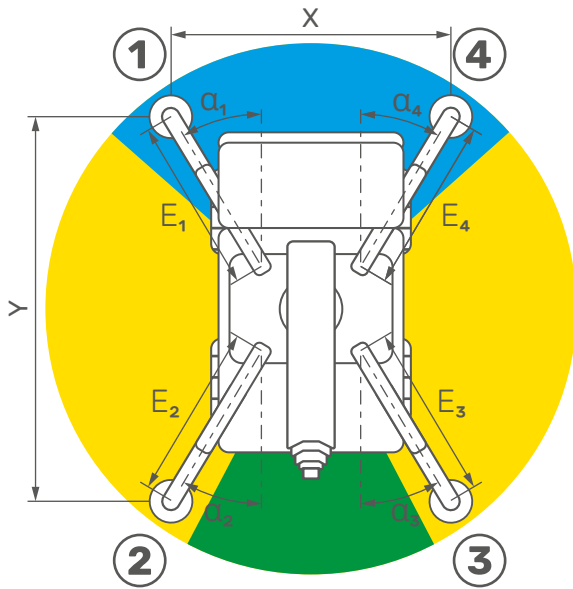


FULLY SYMMETRIC STABILITY

| OUTRIGGERS EXTENSION | OUTRIGGERS ANGLE | | FOOTPRINT DIMENSIONS | |
|----------------------|------------------|--|----------------------|--|
| | | | | |
| | X | | 4,6 m | |
| | Y | | 4,6 m | |
| | α_1 | | 45° | |
| | α_2 | | 45° | |
| | α_3 | | 45° | |
| | α_4 | | 45° | |
| | E_1 | | 2,5 m | |
| | E_2 | | 2,5 m | |
| | E_3 | | 2,5 m | |
| | E_4 | | 2,5 m | |
| | J7 | | 250° | |
| | J4 | | 110° | |

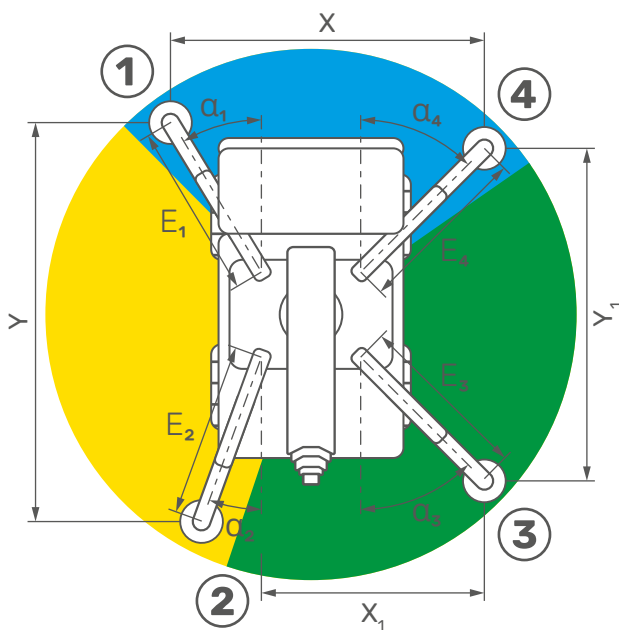
FULLY SYMMETRIC STABILITY

| OUTRIGGERS EXTENSION | OUTRIGGERS ANGLE | | FOOTPRINT DIMENSIONS | |
|----------------------|------------------|--|----------------------|--|
| | | | | |
| | X | | 3,3 m | |
| | Y | | 3,3 m | |
| | α_1 | | 45° | |
| | α_2 | | 45° | |
| | α_3 | | 45° | |
| | α_4 | | 45° | |
| | E_1 | | 1,6 m | |
| | E_2 | | 1,6 m | |
| | E_3 | | 1,6 m | |
| | E_4 | | 1,6 m | |
| | J6 | | 250° | |
| | J4 | | 110° | |



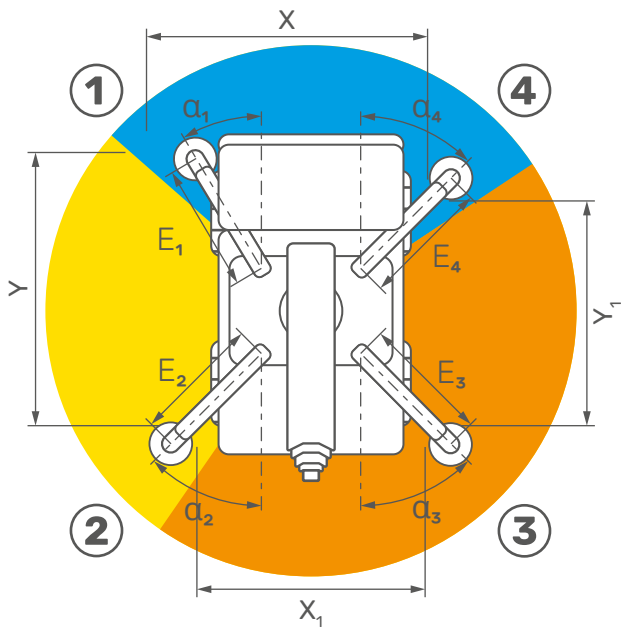
FULLY SYMMETRIC STABILITY

| FOOTPRINT DIMENSIONS | X | 2,8 m |
|----------------------|------------|-------|
| Y | 5,7 m | |
| OUTRIGGERS ANGLE | α_1 | 20° |
| α_2 | 20° | |
| α_3 | 20° | |
| α_4 | 20° | |
| OUTRIGGERS EXTENSION | E_1 | 2,5 m |
| E_2 | 2,5 m | |
| E_3 | 2,5 m | |
| E_4 | 2,5 m | |
| J7 | 32° | |
| J5 | 256° | |
| J4 | 72° | |



ASYMMETRIC STABILITY

| FOOTPRINT DIMENSIONS | X | 3,7 m |
|----------------------|------------|-------|
| X_1 | 3,7 m | |
| Y | 5,7 m | |
| Y_1 | 4,6 m | |
| OUTRIGGERS ANGLE | α_1 | 20° |
| α_2 | 20° | |
| α_3 | 45° | |
| α_4 | 45° | |
| OUTRIGGERS EXTENSION | E_1 | 2,5 m |
| E_2 | 2,5 m | |
| E_3 | 2,5 m | |
| E_4 | 2,5 m | |
| J7 | 141° | |
| J5 | 128° | |
| J4 | 91° | |



ASYMMETRIC STABILITY

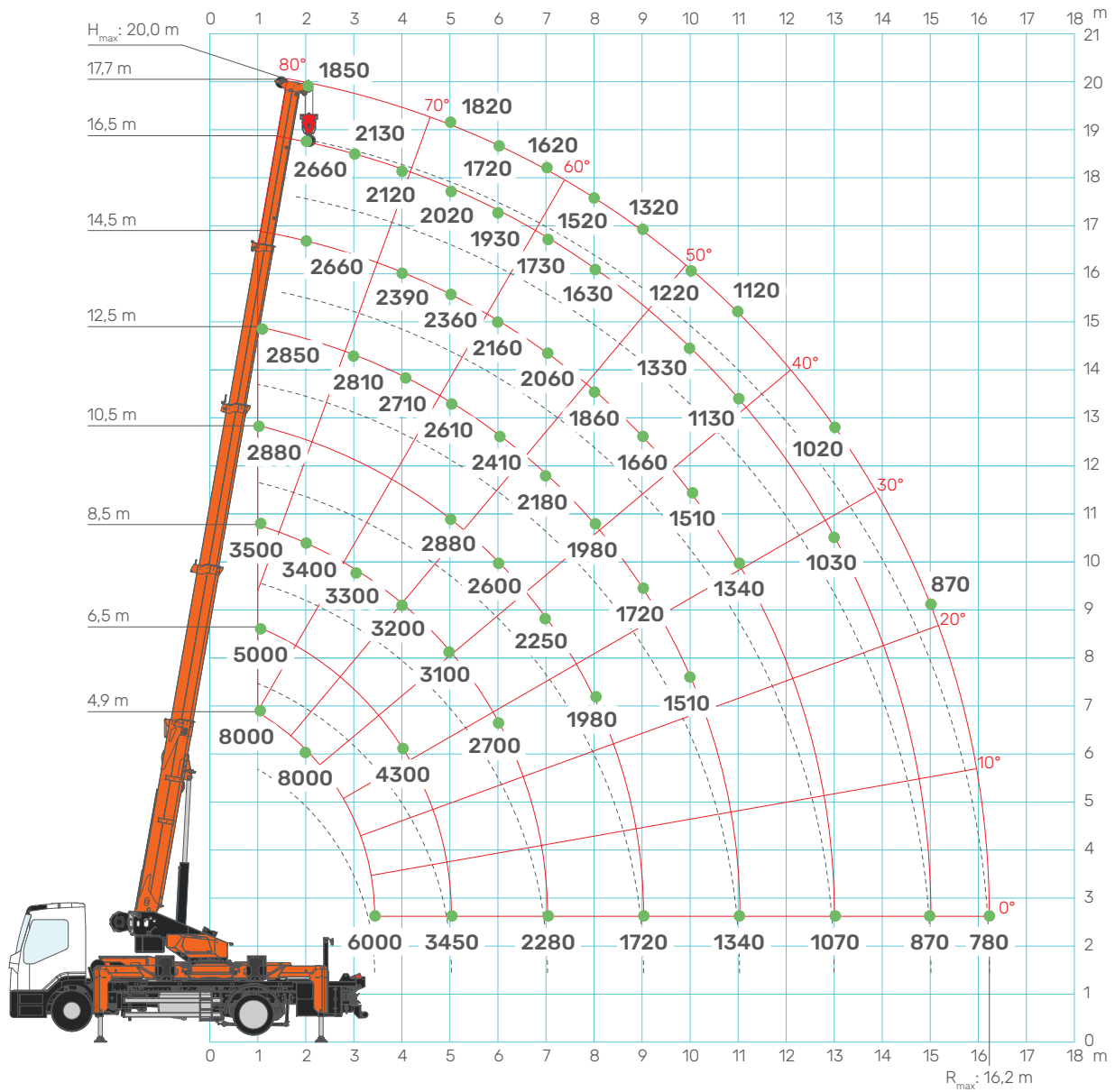
| FOOTPRINT DIMENSIONS | X | 2,7 m |
|----------------------|----------------|-------|
| X ₁ | 3,3 m | |
| OUTRIGGERS ANGLE | Y | 3,7 m |
| Y ₁ | 3,3 m | |
| α_1 | 20° | |
| α_2 | 45° | |
| α_3 | 45° | |
| α_4 | 45° | |
| OUTRIGGERS EXTENSION | E ₁ | 1,6 m |
| E ₂ | 1,6 m | |
| E ₃ | 1,6 m | |
| E ₄ | 1,6 m | |
| J5 | 107° | |
| J4 | 93° | |
| J6 | 160° | |

TRX80

Main boom load chart

14.04.2026 | REV.0.0

MAIN BOOM



CRANE PERFORMANCE: J7

| L [m]→ | 4,9 | 5,5 | 6,5 | 7,5 | 8,5 | 9,5 | 10,5 | 11,5 | 12,5 | 14,5 | 16,5 | 17,7 |
|--------|------|----------------------|------|------|------|------|------|------|------|------|------|------|
| 1 | 8000 | 6500 | 5000 | 4200 | 3500 | 3200 | 2880 | 2860 | 2850 | 2830 | 2820 | 1850 |
| 2 | 8000 | 6500 | 5000 | 4200 | 3400 | 3200 | 2880 | 2860 | 2850 | 2660 | 2660 | 1850 |
| 3 | 6000 | 5600 | 5000 | 4000 | 3300 | 3000 | 2880 | 2860 | 2810 | 2570 | 2130 | 1850 |
| 4 | | 4580 | 4300 | 4000 | 3200 | 2900 | 2880 | 2860 | 2710 | 2390 | 2120 | 1850 |
| 5 | | | 3450 | 3300 | 3100 | 2900 | 2880 | 2760 | 2610 | 2360 | 2020 | 1820 |
| 6 | | | | 2750 | 2700 | 2650 | 2600 | 2560 | 2410 | 2160 | 1930 | 1720 |
| 7 | | | | | 2280 | 2250 | 2250 | 2200 | 2180 | 2060 | 1730 | 1620 |
| 8 | | | | | | 1980 | 1980 | 1980 | 1980 | 1860 | 1630 | 1520 |
| 9 | | | | | | | 1720 | 1720 | 1720 | 1660 | 1430 | 1320 |
| 10 | | | | | | | | 1510 | 1510 | 1510 | 1330 | 1220 |
| 11 | | | | | | | | | 1340 | 1340 | 1130 | 1120 |
| 13 | | | | | | | | | | 1070 | 1030 | 1020 |
| 15 | | | | | | | | | | | 870 | 870 |
| 16,2 | | | | | | | | | | | | 780 |
| ↑R[m] | [kg] | T80__100EU_0426_C1J7 | | | | | | | | | | |

CRANE PERFORMANCE: J6

| L [m]→ | 4,9 | 5,5 | 6,5 | 7,5 | 8,5 | 9,5 | 10,5 | 11,5 | 12,5 | 14,5 | 16,5 | 17,7 |
|--------|------|----------------------|------|------|------|------|------|------|------|------|------|------|
| 1 | 8000 | 6500 | 5000 | 4200 | 3500 | 3200 | 2880 | 2860 | 2850 | 2830 | 2820 | 1850 |
| 2 | 8000 | 6500 | 5000 | 4200 | 3400 | 3200 | 2880 | 2860 | 2850 | 2660 | 2660 | 1850 |
| 3 | 5600 | 5500 | 5000 | 4000 | 3300 | 3000 | 2880 | 2860 | 2810 | 2570 | 2130 | 1850 |
| 4 | | 4100 | 4050 | 4000 | 3200 | 2900 | 2880 | 2860 | 2710 | 2390 | 2120 | 1850 |
| 5 | | | 3180 | 3150 | 3100 | 2900 | 2880 | 2760 | 2610 | 2360 | 2020 | 1820 |
| 6 | | | | 2500 | 2500 | 2500 | 2500 | 2500 | 2410 | 2160 | 1930 | 1720 |
| 7 | | | | | 2080 | 2080 | 2080 | 2080 | 2080 | 2060 | 1730 | 1620 |
| 8 | | | | | | 1780 | 1780 | 1780 | 1780 | 1780 | 1630 | 1520 |
| 9 | | | | | | | 1550 | 1550 | 1550 | 1550 | 1430 | 1320 |
| 10 | | | | | | | | 1350 | 1350 | 1350 | 1330 | 1220 |
| 11 | | | | | | | | | 1200 | 1200 | 1130 | 1120 |
| 13 | | | | | | | | | | 950 | 950 | 950 |
| 15 | | | | | | | | | | | 750 | 750 |
| 16,2 | | | | | | | | | | | | 640 |
| ↑R[m] | [kg] | T80__100EU_0426_C1J6 | | | | | | | | | | |

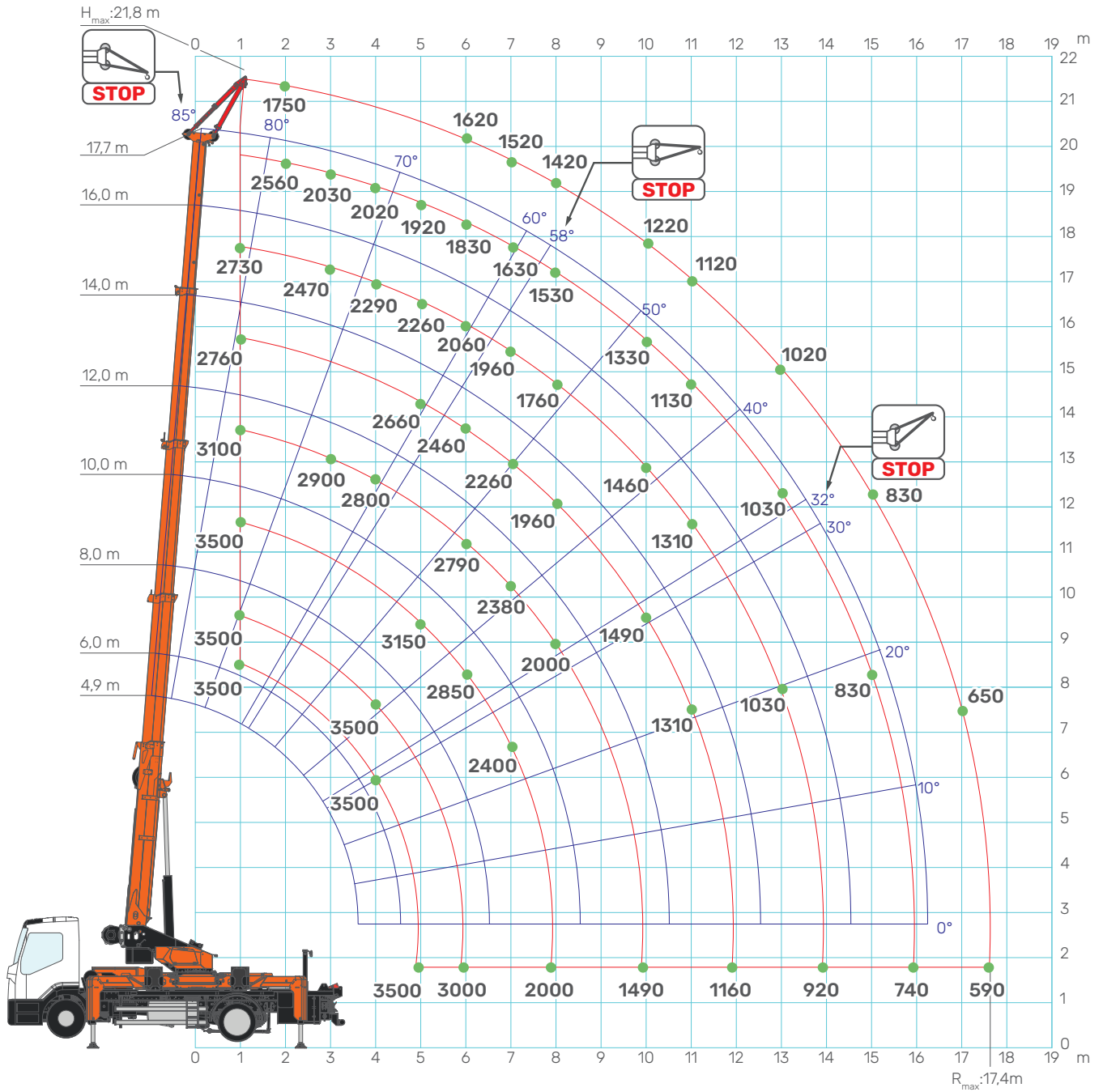
CRANE PERFORMANCE: J5

| L [m]→ | 4,9 | 5,5 | 6,5 | 7,5 | 8,5 | 9,5 | 10,5 | 11,5 | 12,5 | 14,5 | 16,5 | 17,7 |
|--------|------|----------------------|------|------|------|------|------|------|------|------|------|------|
| 1 | 8000 | 6500 | 5000 | 4200 | 3500 | 3200 | 2880 | 2860 | 2850 | 2830 | 2820 | 1850 |
| 2 | 8000 | 6500 | 5000 | 4200 | 3400 | 3200 | 2880 | 2860 | 2850 | 2660 | 2660 | 1850 |
| 3 | 5600 | 5500 | 5000 | 4000 | 3300 | 3000 | 2880 | 2860 | 2810 | 2570 | 2130 | 1850 |
| 4 | | 4100 | 4050 | 4000 | 3200 | 2900 | 2880 | 2860 | 2710 | 2390 | 2120 | 1850 |
| 5 | | | 3130 | 3130 | 3100 | 2900 | 2880 | 2760 | 2610 | 2360 | 2020 | 1820 |
| 6 | | | | 2250 | 2250 | 2250 | 2250 | 2250 | 2250 | 2160 | 1930 | 1720 |
| 7 | | | | | 1730 | 1730 | 1730 | 1730 | 1730 | 1730 | 1730 | 1620 |
| 8 | | | | | | 1410 | 1410 | 1410 | 1410 | 1410 | 1410 | 1410 |
| 9 | | | | | | | 1180 | 1180 | 1180 | 1180 | 1180 | 1180 |
| 10 | | | | | | | | 990 | 990 | 990 | 990 | 990 |
| 11 | | | | | | | | | 850 | 850 | 850 | 850 |
| 13 | | | | | | | | | | 630 | 630 | 630 |
| 15 | | | | | | | | | | | 480 | 480 |
| 16,2 | | | | | | | | | | | | 410 |
| ↑R[m] | [kg] | T80__100EU_0426_C1J5 | | | | | | | | | | |

CRANE PERFORMANCE: J4

| L [m]→ | 4,9 | 5,5 | 6,5 | 7,5 | 8,5 | 9,5 | 10,5 | 11,5 | 12,5 | 14,5 | 16,5 | 17,7 |
|--------|------|----------------------|------|------|------|------|------|------|------|------|------|------|
| 1 | 8000 | 6500 | 5000 | 4200 | 3500 | 3200 | 2880 | 2860 | 2850 | 2830 | 2820 | 1850 |
| 2 | 8000 | 6500 | 5000 | 4200 | 3400 | 3200 | 2880 | 2860 | 2850 | 2660 | 2660 | 1850 |
| 3 | 5450 | 4930 | 4680 | 4000 | 3300 | 3000 | 2880 | 2860 | 2810 | 2570 | 2130 | 1850 |
| 4 | | 3080 | 3080 | 2990 | 2950 | 2900 | 2880 | 2860 | 2710 | 2390 | 2120 | 1850 |
| 5 | | | 2060 | 2060 | 2060 | 2060 | 2060 | 2060 | 2060 | 2060 | 2020 | 1820 |
| 6 | | | | 1450 | 1450 | 1450 | 1450 | 1450 | 1450 | 1450 | 1450 | 1450 |
| 7 | | | | | 1090 | 1090 | 1090 | 1090 | 1090 | 1090 | 1090 | 1090 |
| 8 | | | | | | 870 | 870 | 870 | 870 | 870 | 870 | 870 |
| 9 | | | | | | | 710 | 710 | 710 | 710 | 710 | 710 |
| 10 | | | | | | | | 590 | 590 | 590 | 590 | 590 |
| 11 | | | | | | | | | 490 | 490 | 490 | 490 |
| 13 | | | | | | | | | | 340 | 340 | 340 |
| 15 | | | | | | | | | | | 240 | 240 |
| 16,2 | | | | | | | | | | | | 190 |
| ↑R[m] | [kg] | T80__100EU_0426_C1J4 | | | | | | | | | | |

JIB3502GX



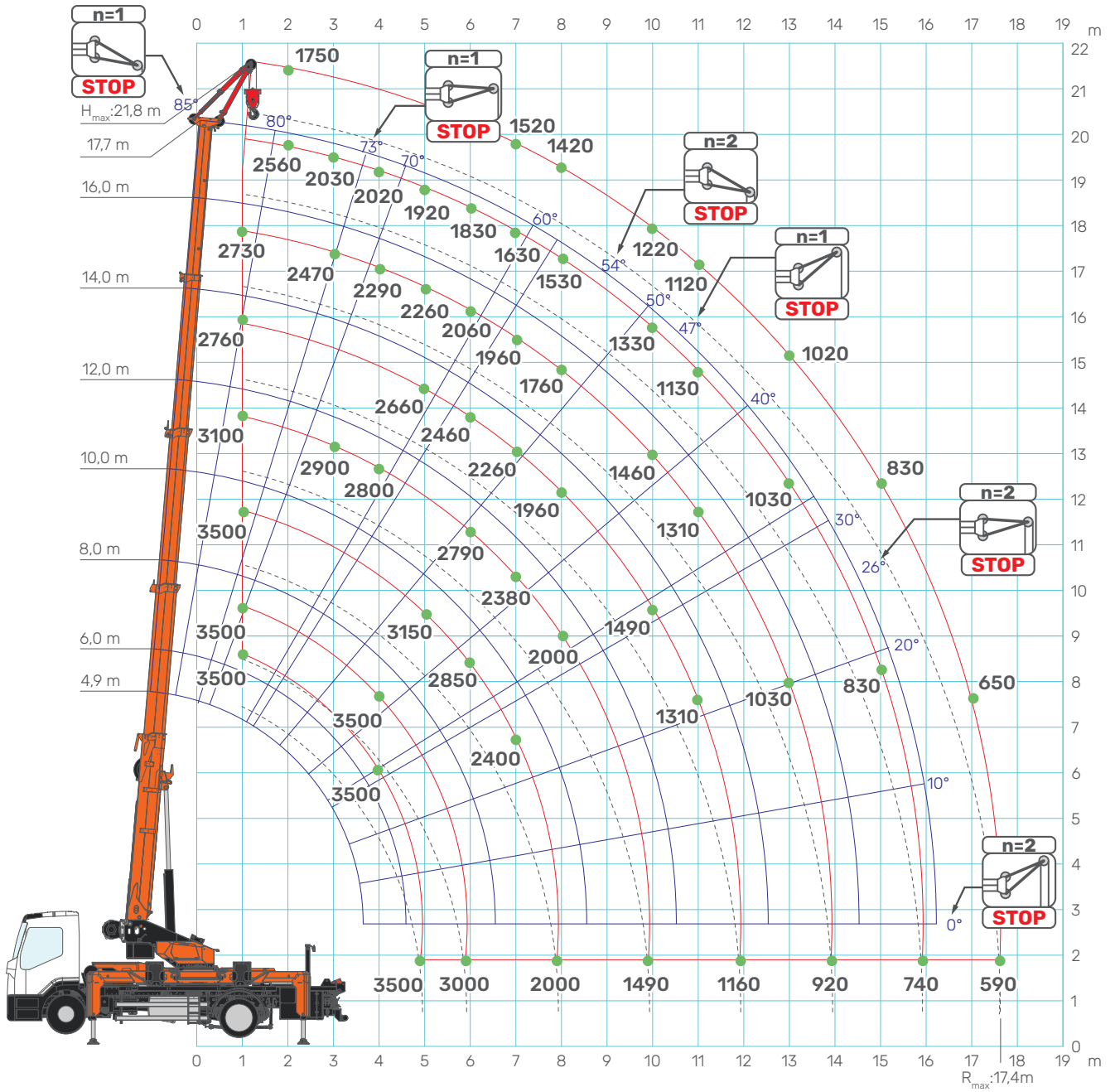
[kg]

*The word "STOP" stands for the maximum working angle of the main boom for the displayed jib configuration.

TRX80

JIB3502GX load chart

14.04.2026 | REV.0.0



*The word "STOP" stands for the maximum working angle of the main boom for the displayed jib configuration.

[kg]

CRANE PERFORMANCE: J7

| L [m]→ | 4,9 | 6,0 | 7,0 | 8,0 | 9,0 | 10,0 | 11,0 | 12,0 | 14,0 | 16,0 | 17,7 |
|--------|------|----------------------|------|------|------|------|------|------|------|------|------|
| 1 | 3500 | 3500 | 3500 | 3500 | 3400 | 3100 | 2780 | 2760 | 2730 | 2720 | 1750 |
| 2 | 3500 | 3500 | 3500 | 3500 | 3300 | 3100 | 2780 | 2760 | 2560 | 2560 | 1750 |
| 3 | 3500 | 3500 | 3500 | 3500 | 3200 | 2900 | 2780 | 2760 | 2470 | 2030 | 1750 |
| 4 | 3500 | 3500 | 3500 | 3500 | 3100 | 2800 | 2780 | 2760 | 2290 | 2020 | 1750 |
| 5 | 3500 | 3500 | 3500 | 3150 | 3000 | 2800 | 2780 | 2660 | 2260 | 1920 | 1720 |
| 6 | | 3000 | 2950 | 2850 | 2820 | 2790 | 2610 | 2460 | 2060 | 1830 | 1620 |
| 7 | | | 2420 | 2400 | 2380 | 2380 | 2300 | 2260 | 1960 | 1630 | 1520 |
| 8 | | | | 2000 | 2000 | 2000 | 2000 | 1960 | 1760 | 1530 | 1420 |
| 10 | | | | | | 1490 | 1490 | 1490 | 1460 | 1330 | 1220 |
| 11 | | | | | | | 1310 | 1310 | 1310 | 1130 | 1120 |
| 13 | | | | | | | | | 1030 | 1030 | 1020 |
| 15 | | | | | | | | | | 830 | 830 |
| 17 | | | | | | | | | | | 650 |
| 17,4 | | | | | | | | | | | 590 |
| ↑R[m] | [kg] | T80__100EU_0426_C1J7 | | | | | | | | | |

CRANE PERFORMANCE: J6

| L [m]→ | 4,9 | 6,0 | 7,0 | 8,0 | 9,0 | 10,0 | 11,0 | 12,0 | 14,0 | 16,0 | 17,7 |
|--------|------|----------------------|------|------|------|------|------|------|------|------|------|
| 1 | 3500 | 3500 | 3500 | 3500 | 3400 | 3100 | 2780 | 2760 | 2730 | 2720 | 1750 |
| 2 | 3500 | 3500 | 3500 | 3500 | 3300 | 3100 | 2780 | 2760 | 2560 | 2560 | 1750 |
| 3 | 3500 | 3500 | 3500 | 3500 | 3200 | 2900 | 2780 | 2760 | 2470 | 2030 | 1750 |
| 4 | 3500 | 3500 | 3500 | 3500 | 3100 | 2800 | 2780 | 2760 | 2290 | 2020 | 1750 |
| 5 | 3500 | 3500 | 3500 | 3150 | 3000 | 2800 | 2780 | 2660 | 2260 | 1920 | 1720 |
| 6 | | 3000 | 2950 | 2850 | 2820 | 2790 | 2610 | 2460 | 2060 | 1830 | 1620 |
| 7 | | | 2420 | 2400 | 2380 | 2380 | 2300 | 2260 | 1960 | 1630 | 1520 |
| 8 | | | | 2000 | 2000 | 2000 | 2000 | 1960 | 1760 | 1530 | 1420 |
| 10 | | | | | | 1450 | 1450 | 1450 | 1450 | 1330 | 1220 |
| 11 | | | | | | | 1240 | 1240 | 1240 | 1130 | 1120 |
| 13 | | | | | | | | | 940 | 940 | 940 |
| 15 | | | | | | | | | | 730 | 730 |
| 17 | | | | | | | | | | | 570 |
| 17,4 | | | | | | | | | | | 520 |
| ↑R[m] | [kg] | T80__100EU_0426_C1J6 | | | | | | | | | |

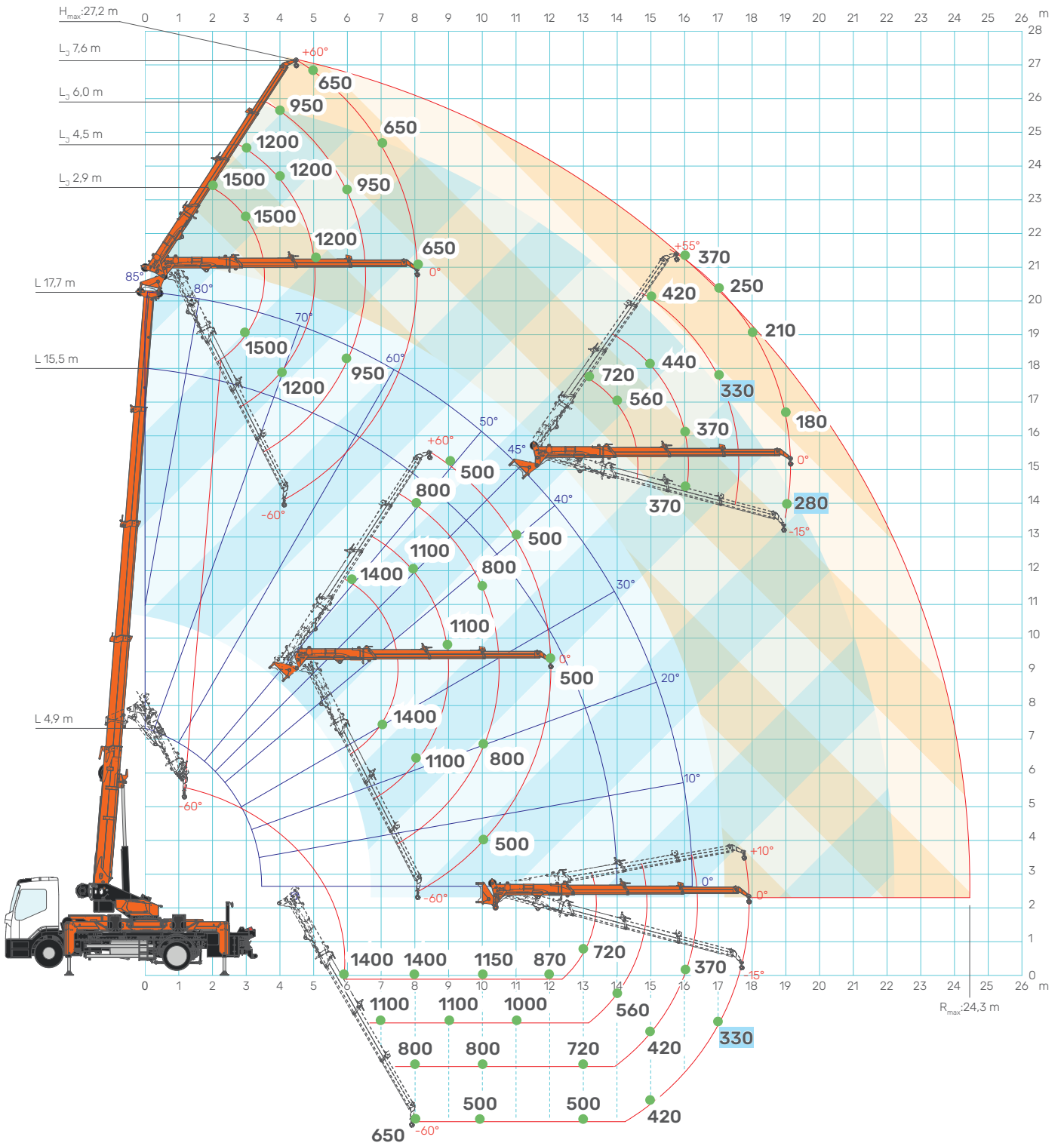
CRANE PERFORMANCE: J5

| L [m]→ | 4,9 | 6,0 | 7,0 | 8,0 | 9,0 | 10,0 | 11,0 | 12,0 | 14,0 | 16,0 | 17,7 |
|--------|------|----------------------|------|------|------|------|------|------|------|------|------|
| 1 | 3500 | 3500 | 3500 | 3500 | 3400 | 3100 | 2780 | 2760 | 2730 | 2720 | 1750 |
| 2 | 3500 | 3500 | 3500 | 3500 | 3300 | 3100 | 2780 | 2760 | 2560 | 2560 | 1750 |
| 3 | 3500 | 3500 | 3500 | 3500 | 3200 | 2900 | 2780 | 2760 | 2470 | 2030 | 1750 |
| 4 | 3500 | 3500 | 3500 | 3500 | 3100 | 2800 | 2780 | 2760 | 2290 | 2020 | 1750 |
| 5 | 3430 | 3400 | 3320 | 3150 | 3000 | 2800 | 2780 | 2660 | 2260 | 1920 | 1720 |
| 6 | | 2470 | 2440 | 2420 | 2420 | 2420 | 2420 | 2410 | 2060 | 1830 | 1620 |
| 7 | | | 1840 | 1830 | 1830 | 1830 | 1830 | 1830 | 1830 | 1630 | 1520 |
| 8 | | | | 1410 | 1410 | 1410 | 1410 | 1410 | 1410 | 1410 | 1410 |
| 10 | | | | | | 980 | 980 | 980 | 980 | 980 | 980 |
| 11 | | | | | | | 830 | 830 | 830 | 830 | 830 |
| 13 | | | | | | | | | 600 | 600 | 600 |
| 15 | | | | | | | | | | 450 | 450 |
| 17 | | | | | | | | | | | 330 |
| 17,4 | | | | | | | | | | | 290 |
| ↑R[m] | [kg] | T80__100EU_0426_C1J5 | | | | | | | | | |

CRANE PERFORMANCE: J4

| L [m]→ | 4,9 | 6,0 | 7,0 | 8,0 | 9,0 | 10,0 | 11,0 | 12,0 | 14,0 | 16,0 | 17,7 |
|--------|------|----------------------|------|------|------|------|------|------|------|------|------|
| 1 | 3500 | 3500 | 3500 | 3500 | 3400 | 3100 | 2780 | 2760 | 2730 | 2720 | 1750 |
| 2 | 3500 | 3500 | 3500 | 3500 | 3300 | 3100 | 2780 | 2760 | 2560 | 2560 | 1750 |
| 3 | 3500 | 3500 | 3500 | 3500 | 3200 | 2900 | 2780 | 2760 | 2470 | 2030 | 1750 |
| 4 | 3420 | 3190 | 3020 | 2870 | 2850 | 2800 | 2780 | 2760 | 2290 | 2020 | 1750 |
| 5 | 2330 | 2300 | 2210 | 2100 | 2090 | 2090 | 2090 | 2080 | 2050 | 1920 | 1720 |
| 6 | | 1650 | 1620 | 1590 | 1590 | 1590 | 1590 | 1590 | 1590 | 1590 | 1570 |
| 7 | | | 1190 | 1180 | 1180 | 1180 | 1180 | 1180 | 1180 | 1180 | 1180 |
| 8 | | | | 870 | 870 | 870 | 870 | 870 | 870 | 870 | 870 |
| 10 | | | | | | 570 | 570 | 570 | 570 | 570 | 570 |
| 11 | | | | | | | 470 | 470 | 470 | 470 | 470 |
| 13 | | | | | | | | | 310 | 310 | 310 |
| 15 | | | | | | | | | | 200 | 200 |
| 16 | | | | | | | | | | 150 | 150 |
| 16,8 | | | | | | | | | | | 110 |
| ↑R[m] | [kg] | T80__100EU_0426_C1J4 | | | | | | | | | |

JIB1502.3HX

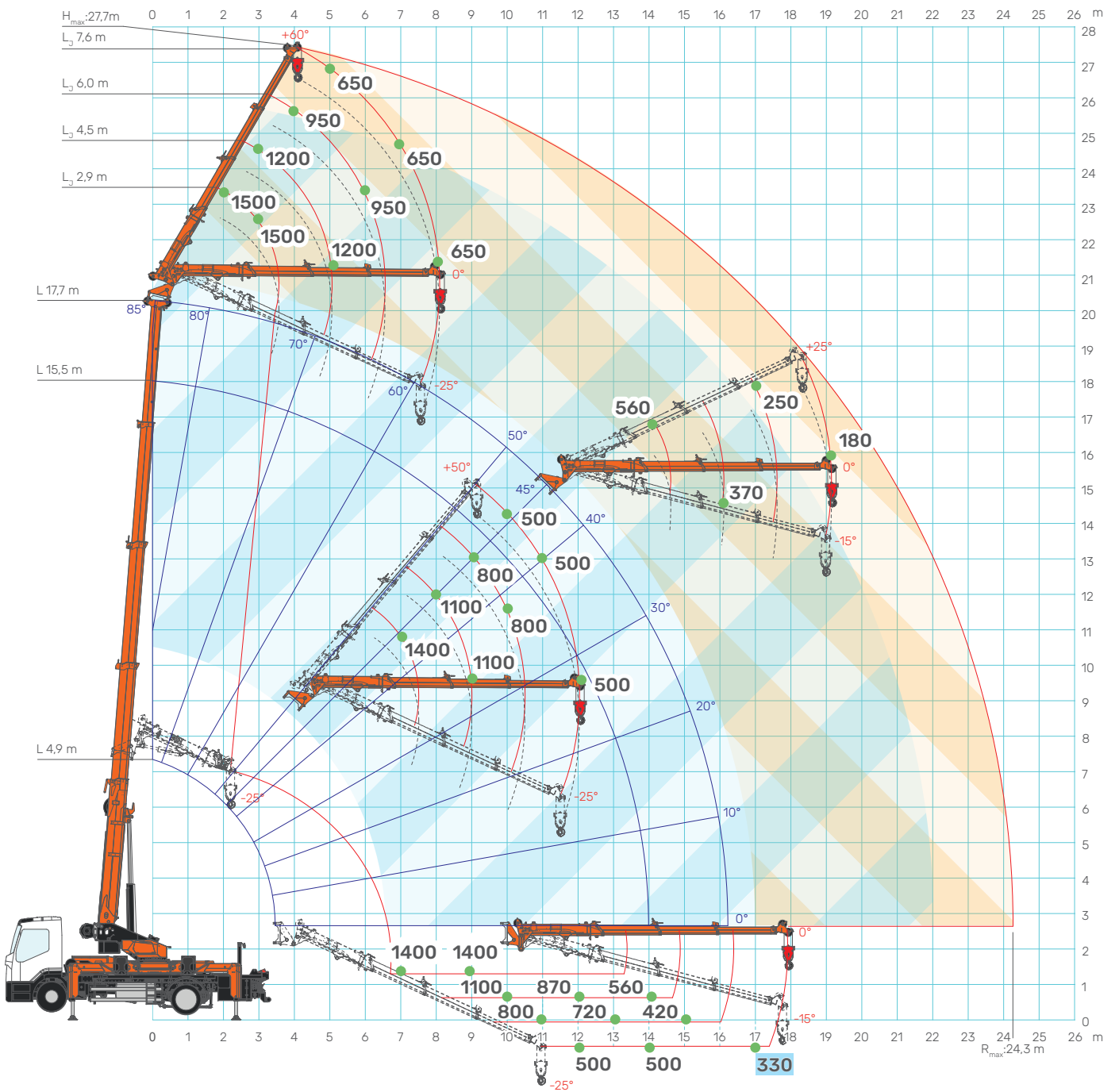


[kg] *Over 10 m main boom radius, the minimum jib angle is limited at -15°

TRX80

JIB1502.3HX load chart

14.04.2026 | REV.0.0



*Over 10 m main boom radius, the minimum jib angle is limited at -15°

[kg]

CRANE PERFORMANCE: J7
(4,9 m < L < 15,5 m)

| L [m]→ | 2,9 | 4,5 | 6,0 | 7,6 |
|--------|------|----------------------|-----|-----|
| 1 | 1500 | 1200 | 950 | 650 |
| 4 | 1500 | 1200 | 950 | 650 |
| 5 | 1400 | 1200 | 950 | 650 |
| 6 | 1400 | 1100 | 950 | 650 |
| 7 | 1400 | 1100 | 950 | 650 |
| 8 | 1400 | 1100 | 800 | 650 |
| 9 | 1400 | 1100 | 800 | 500 |
| 10 | 1150 | 1100 | 800 | 500 |
| 11 | 1050 | 1000 | 800 | 500 |
| 12 | 870 | 870 | 800 | 500 |
| 13 | 720 | 720 | 720 | 500 |
| 14 | 560 | 560 | 560 | 500 |
| 15 | 440 | 440 | 420 | 420 |
| 16 | 370 | 370 | 370 | 370 |
| 17 | 340 | 330 | 330 | 330 |
| 18 | | 330 | 330 | 330 |
| 19 | | 280 | 280 | 280 |
| 20 | | | 260 | 260 |
| 21 | | | | 260 |
| 22 | | | | 220 |
| 22,1 | | | | 220 |
| ↑R[m] | [kg] | T80__100EU_0426_C1J1 | | |

CRANE PERFORMANCE: J7
(L > 15,5 m)

| L [m]→ | 2,9 | 4,5 | 6,0 | 7,6 |
|--------|------|----------------------|-----|-----|
| 1 | 1500 | 1200 | 950 | 650 |
| 4 | 1500 | 1200 | 950 | 650 |
| 5 | 1400 | 1200 | 950 | 650 |
| 6 | 1400 | 1100 | 950 | 650 |
| 7 | 1400 | 1100 | 950 | 650 |
| 8 | 1400 | 1100 | 800 | 650 |
| 9 | 1400 | 1100 | 800 | 500 |
| 10 | 1150 | 1100 | 800 | 500 |
| 11 | 1050 | 1000 | 800 | 500 |
| 12 | 870 | 870 | 800 | 500 |
| 13 | 720 | 720 | 720 | 500 |
| 14 | 560 | 560 | 560 | 500 |
| 15 | 440 | 440 | 420 | 420 |
| 16 | 370 | 370 | 370 | 370 |
| 17 | 250 | 250 | 250 | 250 |
| 18 | 210 | 210 | 210 | 210 |
| 19 | 180 | 180 | 180 | 180 |
| 20 | | 150 | 150 | 150 |
| 21 | | 130 | 130 | 130 |
| 22 | | | 120 | 120 |
| 23 | | | | 110 |
| 24,3 | | | | 100 |
| ↑R[m] | [kg] | T80__100EU_0426_C1J7 | | |

CRANE PERFORMANCE: J6

| L [m]→ | 2,9 | 4,5 | 6,0 | 7,6 |
|--------|------|-----------------------|-----|-----|
| 1 | 1500 | 1000 | 800 | 500 |
| 2 | 1500 | 1000 | 800 | 500 |
| 3 | 1500 | 1000 | 800 | 500 |
| 4 | 1500 | 1000 | 800 | 500 |
| 5 | 1400 | 1000 | 800 | 500 |
| 6 | 1400 | 1000 | 800 | 500 |
| 7 | 1400 | 1000 | 800 | 500 |
| 8 | 1400 | 1000 | 800 | 500 |
| 9 | 1330 | 1000 | 800 | 500 |
| 10 | 1050 | 1000 | 800 | 500 |
| 11 | 840 | 840 | 800 | 500 |
| 12 | 660 | 660 | 660 | 500 |
| 13 | 510 | 510 | 510 | 500 |
| 14 | 390 | 390 | 390 | 390 |
| 15 | 290 | 290 | 290 | 290 |
| 16 | 200 | 200 | 200 | 200 |
| 16,8 | 120 | 120 | 120 | 120 |
| ↑R[m] | [kg] | T80_-_100EU_0426_C1J6 | | |

CRANE PERFORMANCE: J5

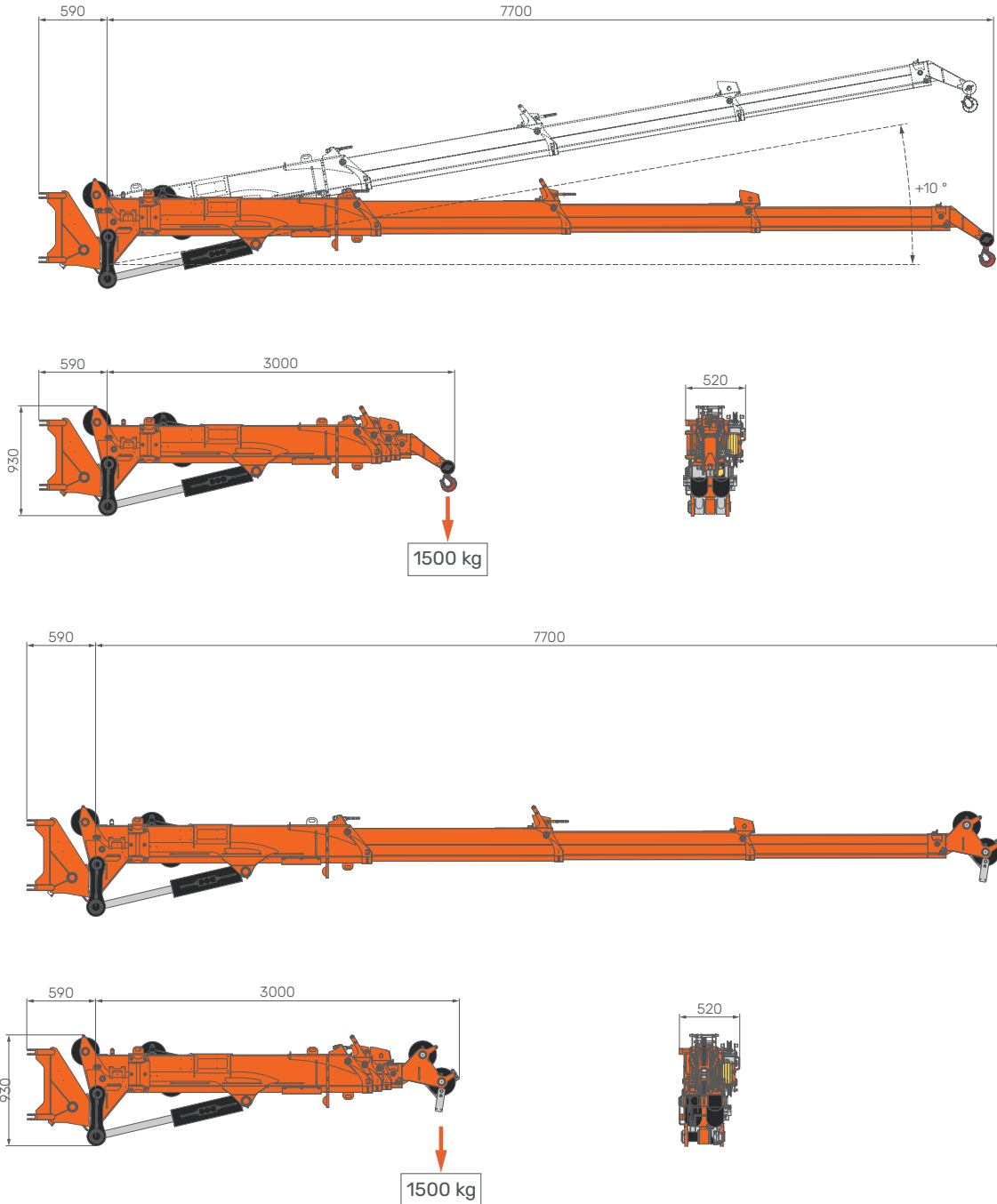
| L [m]→ | 2,9 | 4,5 | 6,0 | 7,6 |
|--------|------|----------------------|-----|-----|
| 1 | 1500 | 1000 | 800 | 500 |
| 2 | 1500 | 1000 | 800 | 500 |
| 3 | 1500 | 1000 | 800 | 500 |
| 4 | 1500 | 1000 | 800 | 500 |
| 5 | 1400 | 1000 | 800 | 500 |
| 6 | 1400 | 1000 | 800 | 500 |
| 7 | 1350 | 1000 | 800 | 500 |
| 8 | 1060 | 1000 | 800 | 500 |
| 9 | 780 | 780 | 780 | 500 |
| 10 | 580 | 580 | 580 | 500 |
| 11 | 420 | 420 | 420 | 420 |
| 12 | 280 | 280 | 280 | 280 |
| 12,8 | 180 | 180 | 180 | 180 |
| ↑R[m] | [kg] | T80__100EU_0426_C1J5 | | |

CRANE PERFORMANCE: J4

| L [m]→ | 2,9 | 4,5 | 6,0 | 7,6 |
|--------|------|----------------------|-----|-----|
| 1 | 1500 | 1000 | 800 | 500 |
| 2 | 1500 | 1000 | 800 | 500 |
| 3 | 1500 | 1000 | 800 | 500 |
| 4 | 1500 | 1000 | 800 | 500 |
| 5 | 1400 | 1000 | 800 | 500 |
| 6 | 1030 | 1000 | 800 | 500 |
| 7 | 750 | 750 | 750 | 500 |
| 8 | 530 | 530 | 530 | 500 |
| 9 | 310 | 310 | 310 | 310 |
| 9,8 | 170 | 170 | 170 | 170 |
| ↑R[m] | [kg] | T80__100EU_0426_C1J4 | | |

ACCESSORIES

JIB1502.3HX

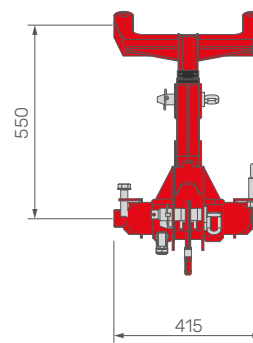
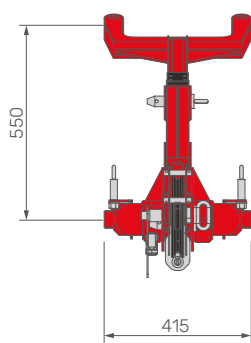
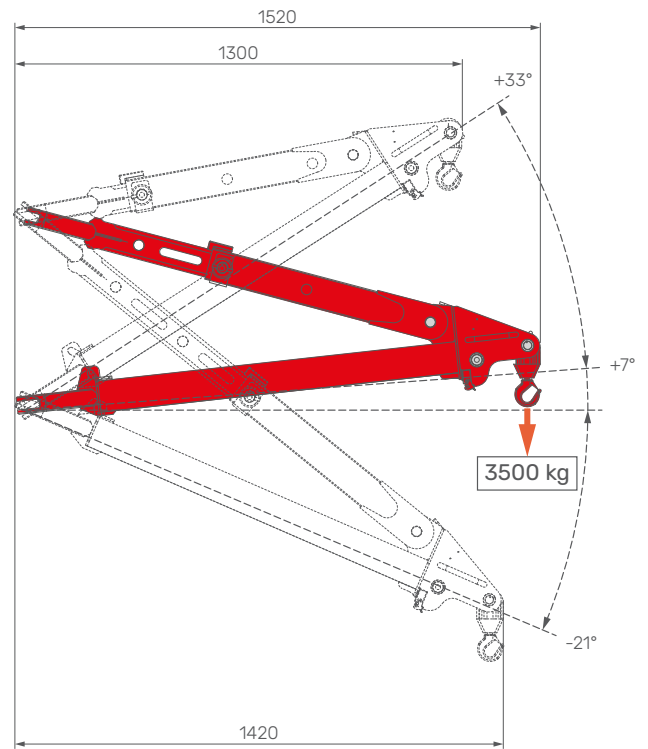
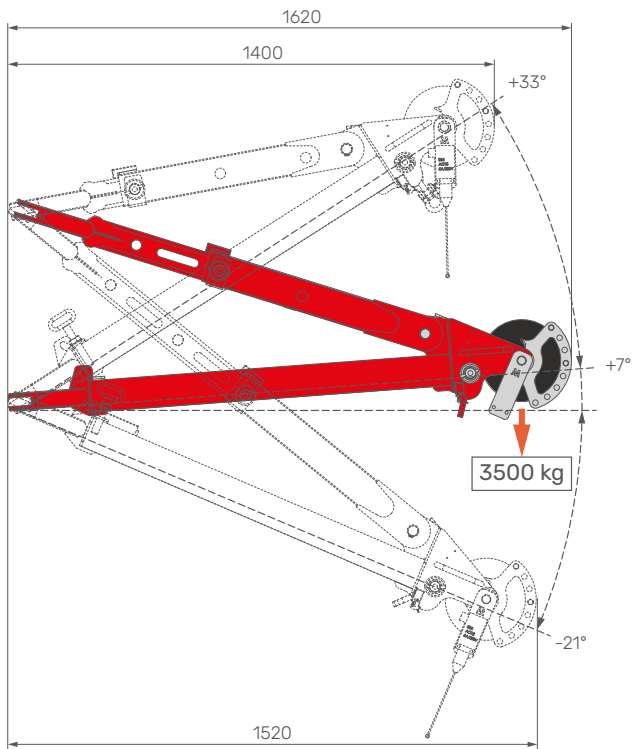


WEIGHT



| | | | |
|-----|-------------|----|-----|
| JIB | JIB1502.3HX | kg | 675 |
|-----|-------------|----|-----|























JIB3502GX



| | | | | | |
|---------------|--|-----|-----------|----|----|
| WEIGHT | | JIB | JIB3502GX | kg | 70 |
| | | | | | |

[mm]

SYMBOLS

| | | | |
|---|---|---|---|
|  Weight |  Outriggers Mats |  Main Boom Lifting |  Hydraulic System |
|  Crane |  Powerpack |  Boom Length |  Electric Motorization |
|  Maximum Axle Load |  Hookblock |  Jib |  Working Temperature |
|  Gradeability |  Maximum Capacity |  Turret Slewing |  Hydraulic Activation |
|  Maximum Wind Load |  Maximum Outriggers Load |  Winch |  Hook |
|  Electric System |  Electric Motorization | | |

LOAD CHARTS REMARKS

- Load tables have been calculated following the EN 13000:2014 standard.
- Load tables have been calculated considering a wind load of 13,8 m/s, a sail area of 1m²/t and a drag coefficient of 1,2.
- Load capacities are given in kg.
- Hookblocks and hooks weight is part of the load, hence it shall be deducted from the capacity values.
- The working radius is measured form the turret slewing center.
- The supplied Technical Data is part of the Use & Maintenance Manual.
- Features and specifications may change without prior advice.
- All indicated data are for informational purposes only and are not binding as the crane performs differently depending on its use.



Jekko s.r.l.

Via Galileo Galilei, 6/8 – 31010 Godega di Sant’Urbano (TV) – Italy
info@jekko.it – www.jekko-cranes.com

SERIAL NUMBER:



14.04.2026 | REV0.0