

MINICRANE SPD260C+

PATENTED

Minicrane SPD 200 C is a tracked machine equipped with an hydraulic crane. It is light and small-sized, easy to manage and drive. It is also self-functioning, because can be power supplied both by battery or connected to the electrical grid.

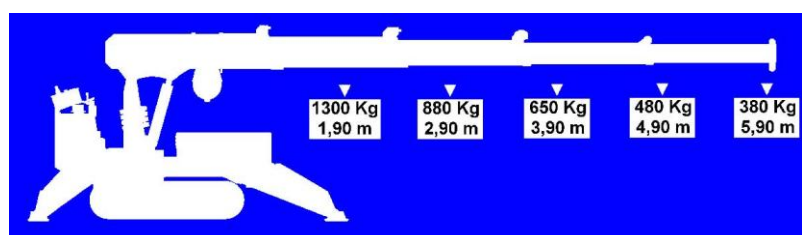
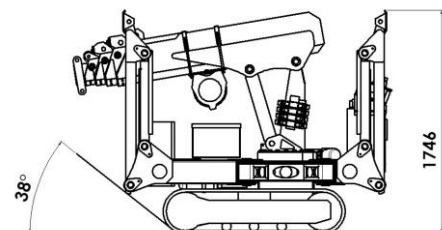
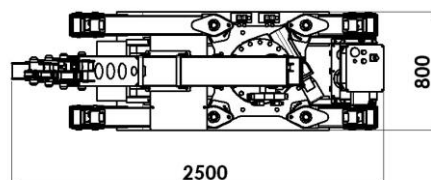
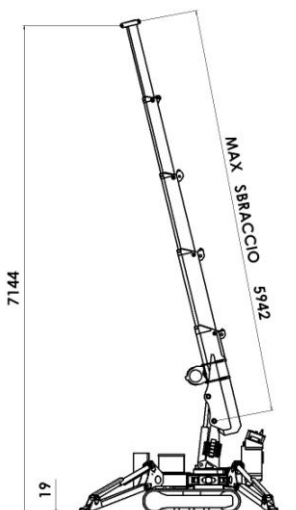


Minicrane SPD 200 C is particularly profitable to use in situations where required:

- ▶▶ Limited load to the ground
- ▶▶ A small sized machine for transport
- ▶▶ Easy manoeuvring
- ▶▶ High working speed
- ▶▶ Safe stability all the working area round
- ▶▶ Sensitive and precise load handling
- ▶▶ An high-fidelity and heavy-duty machine

It is equipped with a telescopic boom crane with inner cylinder. The boom system has one only inner piston and can function thanks to a chain tail-sheave system.

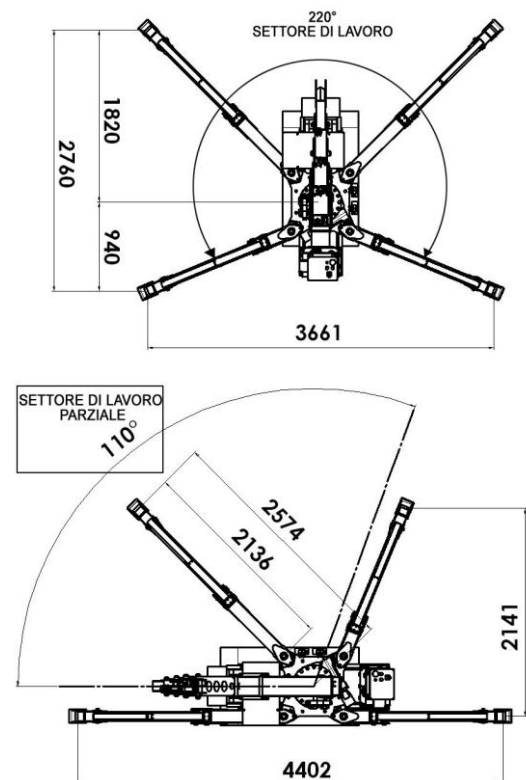
The crane has a max load capacity of 26 kNm; the load capacity can be set according to the lay-out of the machine. With its **4 hydraulic extensions with pentagonal section**, it can reach a max extension of 6 m.



In fact, **Minicrane SPD 200 C** is equipped with:

- ▶ A TRUCKED STEEL FRAME to carry out translation movements; it can assure:
 - A load to the ground below **0.4 Kg/cm²**
 - Easy manoeuvring over floors and in cramped rooms/space
 - Very short wheel-turning ray
- ▶ A TELESCOPIC BOOM CRANE, with inner cylinder, which can assure:
 - High-fidelity and heavy-duty performance when working in cramped rooms, where the risk of crash into walls and obstacles is substantial
 - High working speed
- ▶ SCS – STABILITY CONTROL SYSTEM which assures stability of the machine on the whole working area, because:
 - The machine can work only if properly stabilized: an user interface allows to control continuously all the functionalities of the **Minicrane SPD 200 C**. In this way, rollover is avoided and the operator is always safe.
 - Different working sectors have been distinguished in order to be able to stabilize **Minicrane SPD 200 C** on one only of its sides. In this way, **safe operational condition is always assured.**
- ▶ A MULTIPLE CONTROL SYSTEM, equipped with:
 - radio control system: for the crane movements
 - wire control system: for the translation of the vehicle and for the stabilization of the machine

- manual controls: for emergency use
- removable control panel: to avoid improper use by unauthorized people.
- trouble-shooting (self-diagnostic) system: the electrical switchboard, thanks to its user interface, allows the operator to control the machine's working conditions and to shoot possible troubles.
- ▶ BATTERY POWER SUPPLYING allows the machine
 - to work also without being connected to the electrical grid.
- ▶ DOUBLE-PULLING HOIST :
 - Assures high precision in handling operations



| SPD 260 C+ Technical Features | | | |
|--------------------------------------|--|--|---|
| Crane | 4 hydraulics + 1 manual extensions; optional winch, hoisting power: 1000kg | Crane control directional valves | Directional control valves - radio controlled |
| Slewing | 220° | Power supply | Electrical engine 24V DC – 5 kW |
| Standard accessories | Battery charger | Outriggers | Hydraulic pantograph type outriggers |
| Weight | 1700 Kg | Translation and outriggers valves | Translation controlled by Joystick and outriggers controlled by manual directional control valves |
| Hydraulic system | 2 pumps – working pressure 190 bar; tank capacity 50 Lt – filter in pressure and suction | Standard safety equipment | Crane block until stabilization in complete; anti-collision device to the top roof, hoisting rope limit switch; heat switch on electrical system; pressure valves on hydraulic system; overblock valves on all cylinders; acoustic alarms; led signal when stabilization is complete. |
| Translation | Trucked vehicle, automatic opening of the break when moving, overblock valve – Maximum slope 20% | | |